

# MONTHLY MEMBERSHIP PROGRESS REPORT

LOCATION NOVA SCOTIA

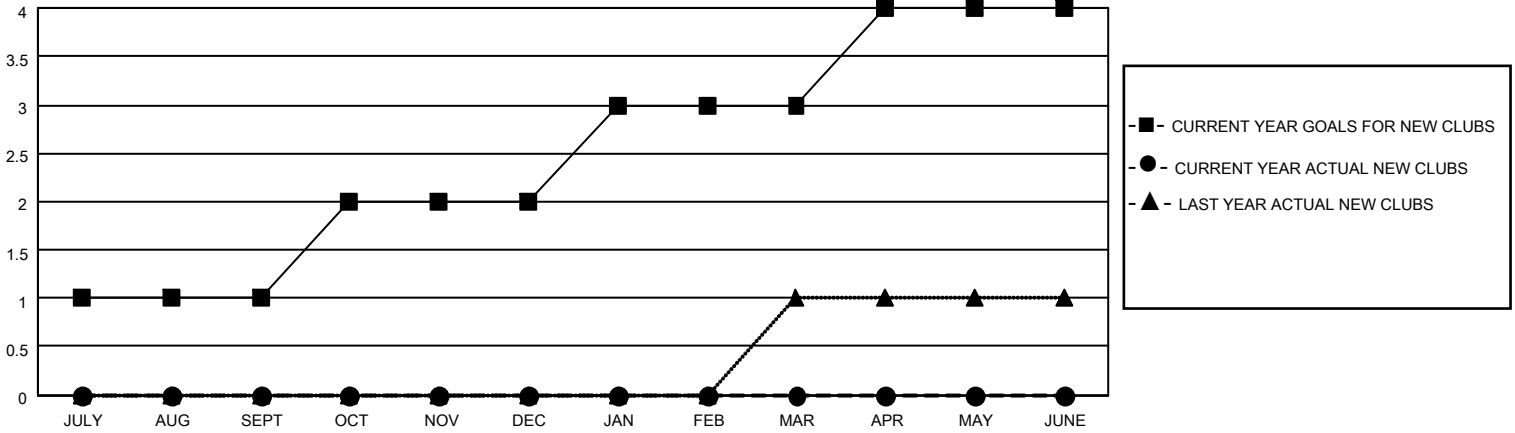
District N 2

Results as of: 6/30/2023

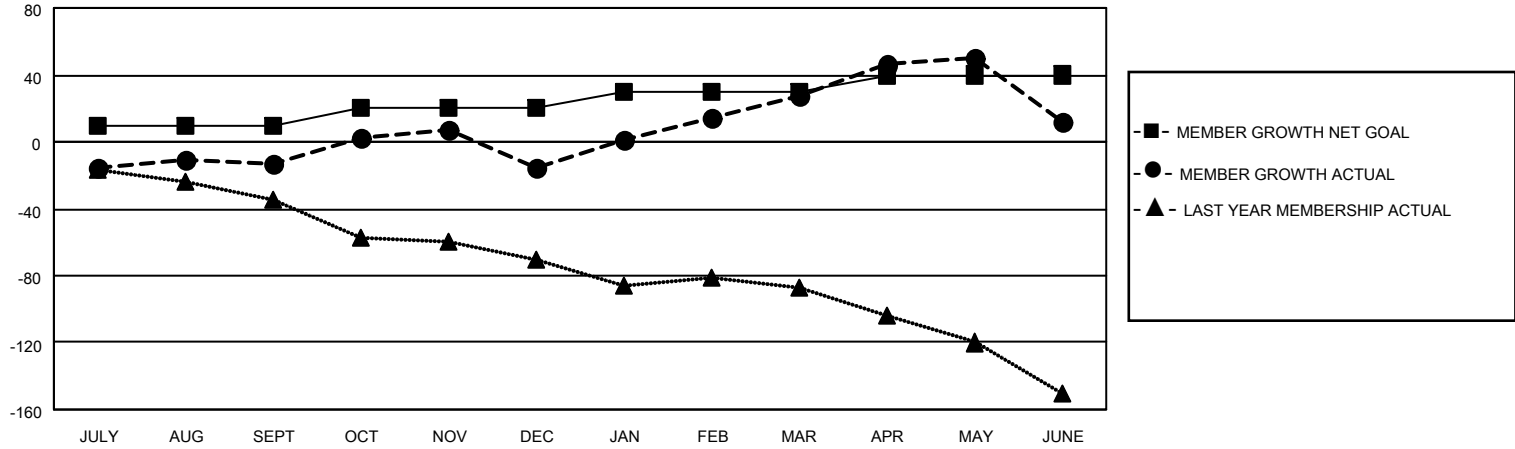
Clubs			
RESULTS FOR 2022-2023			
QUARTER	NEW CLUB GOAL	NEW CLUBS	DROPPED CLUBS
JULY/AUG/SEPT	1	0	0
OCT/NOV/DEC	1	0	0
JAN/FEB/MAR	1	0	0
APR/MAY/JUNE	1	0	1

Members			
RESULTS FOR 2022-2023			
QUARTER	MEMBER GROWTH NET GOAL	MEMBER GROWTH ACTUAL	DROPPED MEMBERS ACTUAL (including transfers)
JULY/AUG/SEPT	10	31	41
OCT/NOV/DEC	10	64	60
JAN/FEB/MAR	10	94	48
APR/MAY/JUNE	10	72	81

**GOALS AND ACTUAL NEW CLUBS CUMULATIVE**



**GOALS AND ACTUAL MEMBERS CUMULATIVE**



DROPPED CLUBS: 1	
<u>DROPPED MEMBERS</u>	
DECEASED	35
CLUB CANCELLED	0
OTHER	195
<b>TOTAL</b>	<b>230</b>

50 CLUBS OF 69 ADDED 1 OR MORE NEW MEMBERS

[CLICK HERE FOR CUMULATIVE MEMBERSHIP DATA](#)

<u>GENDER DISTRIBUTION</u>	
MALE	956 (58.79%)
FEMALE	670 (41.21%)
NON BINARY	0 (0.00%)
PREFER NOT TO ANSWER	0 (0.00%)
<b>TOTAL FAMILY UNIT MEMBERS</b>	<b>316</b>
<b>FAMILY MEMBERS PAYING HALF DUES</b>	<b>163</b>